



Operation Manual

eyc-tech PMM330

Differential Pressure Transmitter (Indoor)



eyc-tech PMM330



Contents

| | |
|----------------------------------|------|
| 1. Security considerations | P.02 |
| 2. Dimension..... | P.03 |
| 3. Connection Diagram..... | P.03 |
| 4. Analog Output setting..... | P.04 |
| 5. Autozero..... | P.04 |
| 6. RS-485 and Modbus..... | P.05 |
| 7. User Software..... | P.06 |

1. Security considerations

Please read this Specification carefully, prior to use of this, and keep the manual properly, for timely reference.

Solemn Statement :

This product can not be used for any explosion-proof area.

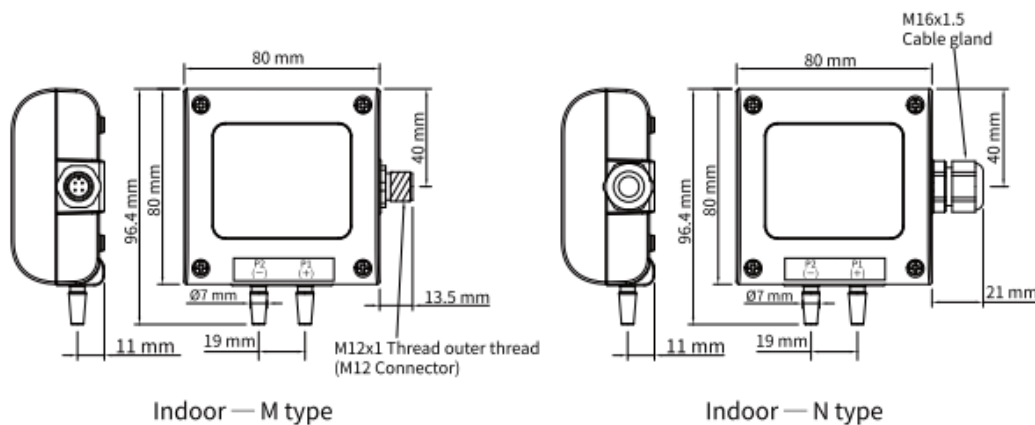
Do not use this product in a situation where human life may be affected.

eyc-tech will not bear any responsibility for the results produced by the operators !

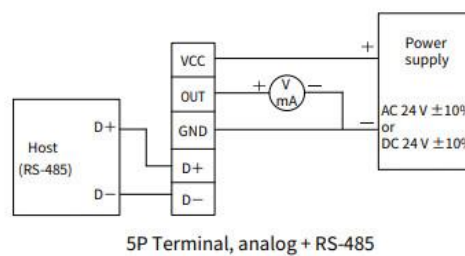
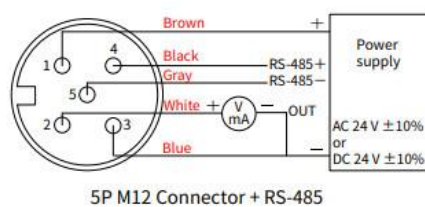
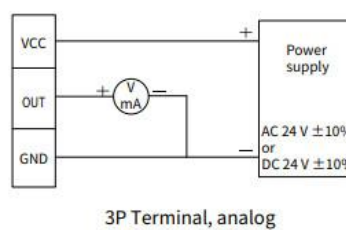
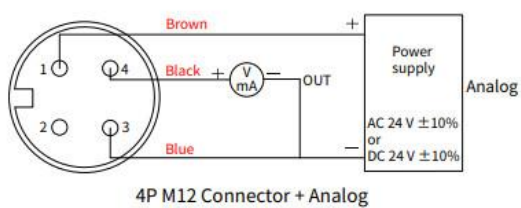
Warning!

- Installation and wiring must be performed by qualified personnel in accordance with all applicable safety standards.
- This product must be operated under the operating conditions specified in manual to prevent equipment damages.
- Please using the product under the ordinary pressure, or it will influence safe problem.
- This product must be operated under the operating condition specified in this manual to prevent equipment damages.
- This product must be operated under the normally atmospheric condition to prevent equipment damages.
- To prevent products damage, always disconnect the power supply from the product before performing any wiring and installation.
- All wiring must comply with local codes of indoor wiring and electrical installation rules.
- Please use crimp type terminal.
- To prevent personal injury, do not touch the moving part of product in operation.
- It may cause high humidity atmosphere during the product was breakdown. Please take safety strategy.

2. Dimension

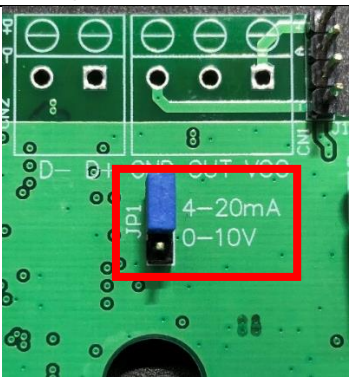
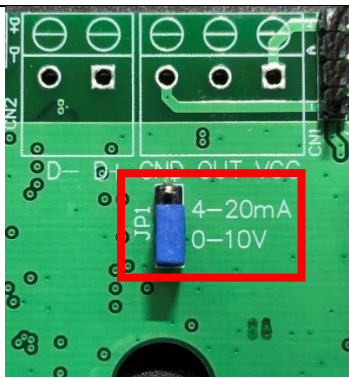


3. Connection Diagram



4. Analog Output setting

User can choose 4 ... 20 mA or 0 ... 10 V for analog output by placing jumper to the corresponding places shown in the table below.

| | |
|---|--|
|  |  |
| 4 ... 20 mA | 0 ... 10 V |

*** User must do a power cycle after changing jumper placement.**

5. Autozero

This button allows user to set the current pressure to zero point. It is required to press the button about 5 seconds, and user can see LED2 will turn on. Then user can release this button and will see the LED2 flashing, and the new zero point has been set.

This button also allows user to restore factory default setting. It is required to press the button about 10 seconds, user will first see LED2 turn on then off. Then user can release this button and will see the LED2 flashing, and the new zero point has been set.



6. RS-485 and Modbus

PMM330 integrate a RS-485 interface for digital communication as a option feature.

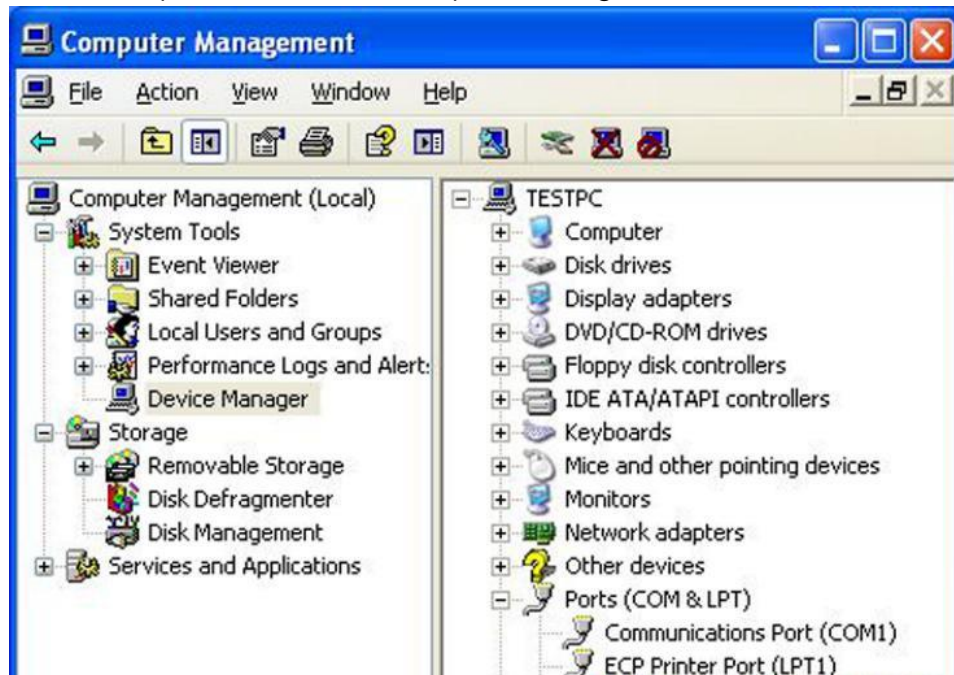
Based on Modbus protocol makes the general convenience on PLC, HMI and PC connection. For Modbus protocol information please attached the file from website to download. Besides the PLC, HMI application, the user software provide the device setting and data logging function, it also can free download from website

Technical Data

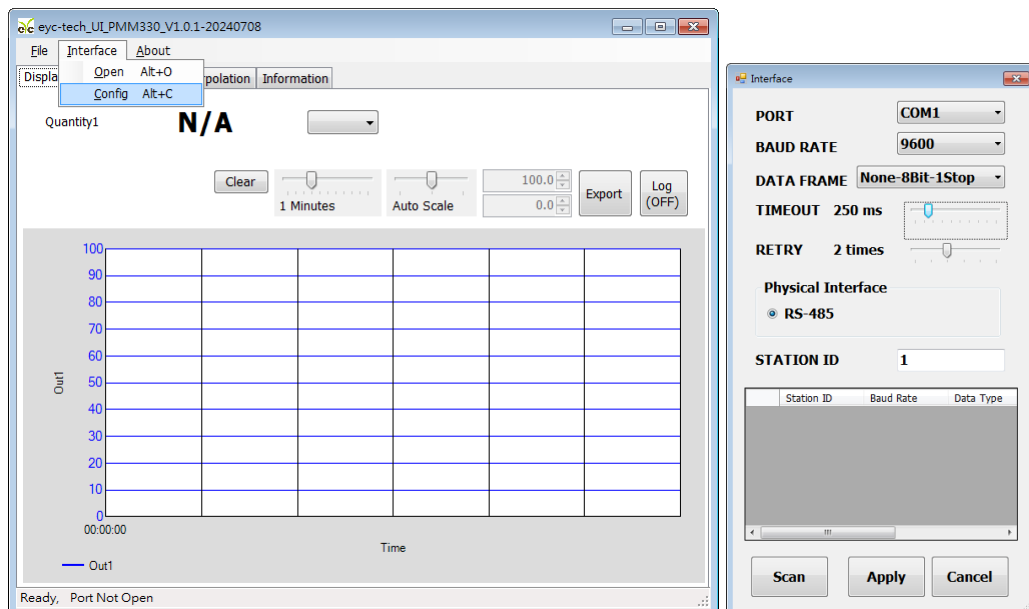
- Max. network size: 32 transmitters
- Communication: with COM-Port (serial interface) of PC
- Max. network expansion: 1200m (3937ft) total length at 9600 baud
- Transmission rate: 9600, 19200, 38400, 57600, 115200 Baud
- Parity: None, Even, Odd
- Data length: 8 bit
- Stop bit: 1 or 2 bit
- Factory default Station address = 1, Data format= 9600, N81

7. User Software

1. Hardware connection: Connect the PMM330 to PC by USB to RS-485 converter.
2. Check the COM port number from Computer Management

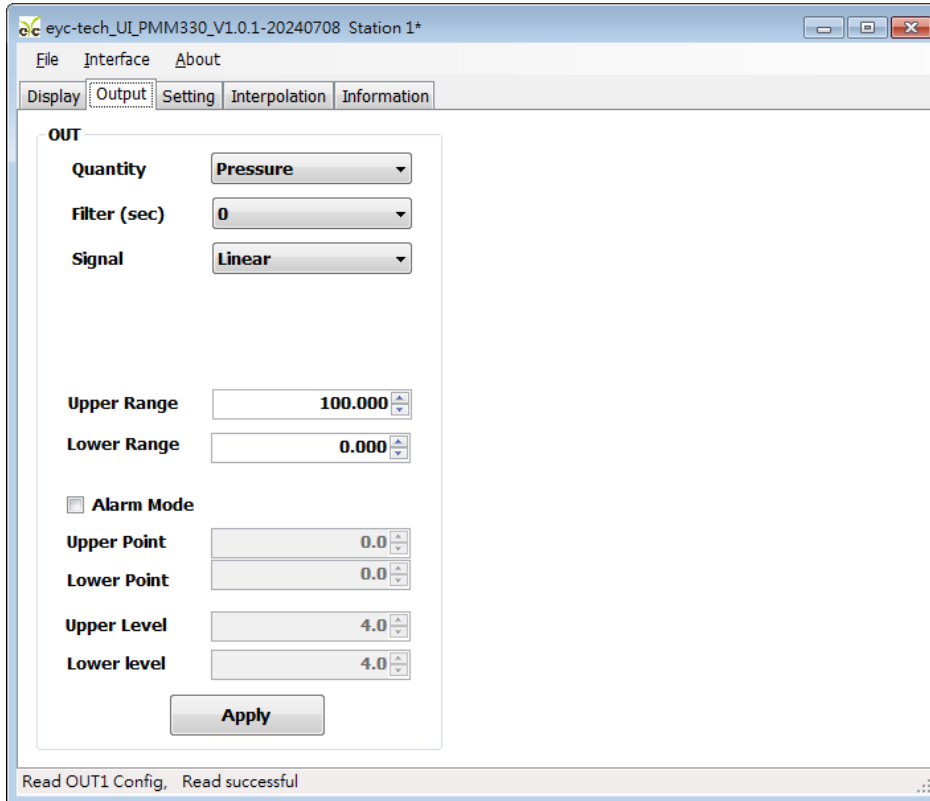


3. Open the PMM33_UI, go to function "Interface" , click item "Config" and then setting COM port, BAUD rate and data format, pressed "Scan" bottom for scan devices and "Apply" for connection.



4. Setting on Analog Output

- i. Quantity: Pressure
- ii. Filter: 0, 5, 10, 20, 25 seconds
- iii. Signal: Linear / Square root extraction
 - LCD shown the $\sqrt{}$ mark on left-low side and red led of LDEP flash slowly while the square root extracted function has active.
- iv. Range for Upper and Lower



eyc-tech UI_PMM330_V1.0.1-20240708 Station 1*

File Interface About

Display Output Setting Interpolation Information

OUT

Quantity: Pressure

Filter (sec): 0

Signal: Linear

Upper Range: 100.000

Lower Range: 0.000

☐ Alarm Mode

Upper Point: 0.0

Lower Point: 0.0

Upper Level: 4.0

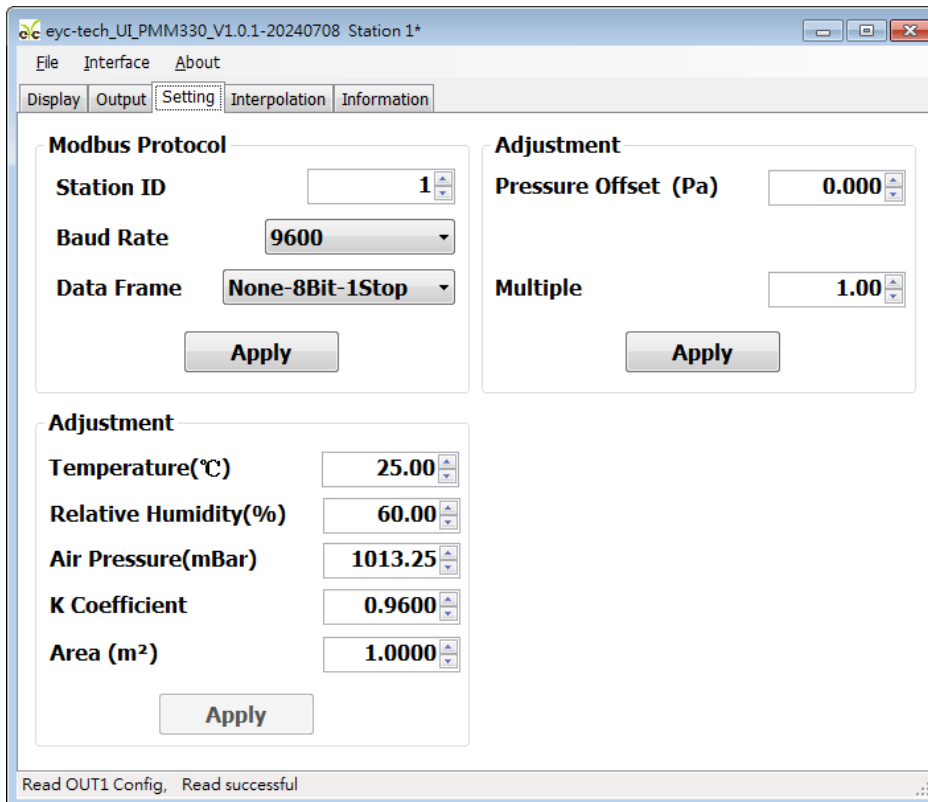
Lower level: 4.0

Apply

Read OUT1 Config. Read successful

5. Setting on RS-485 and offset adjustment

- i. Station ID: 1~247
- ii. Baud Rate: 9600 / 19200 / 38400 / 57600 / 115200
- iii. Data Frame: None-8Bit-1Stop / None-8Bit-2Stop / Even-8Bit-1Stop / Even-8Bit-2Stop / Odd-8Bit-1Stop / Odd-8Bit-2Stop /
- iv. Pressure Offset adjustment, unit available in inH₂O only
- v. Multiple on measuring value, from 0.01 to 100



The screenshot shows the 'Setting' tab of the software interface. It is divided into two main sections: 'Modbus Protocol' and 'Adjustment'.

Modbus Protocol Section:

- Station ID:** 1
- Baud Rate:** 9600
- Data Frame:** None-8Bit-1Stop
- Apply** button

Adjustment Section (Top):

- Pressure Offset (Pa):** 0.000
- Multiple:** 1.00
- Apply** button

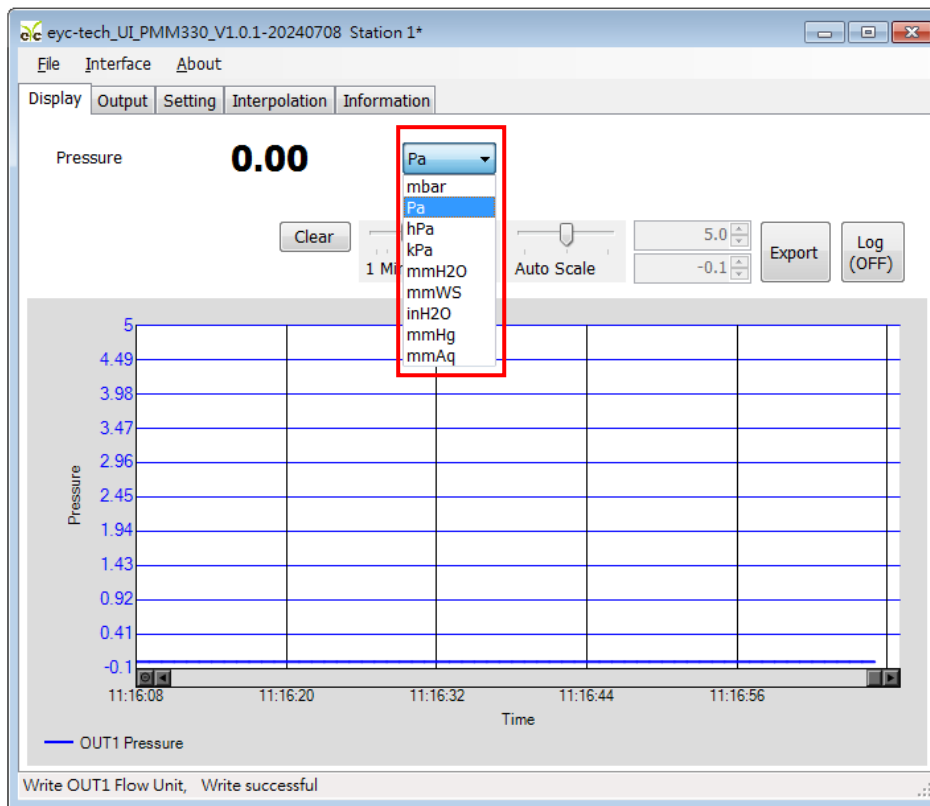
Adjustment Section (Bottom):

- Temperature(°C):** 25.00
- Relative Humidity(%):** 60.00
- Air Pressure(mBar):** 1013.25
- K Coefficient:** 0.9600
- Area (m²):** 1.0000
- Apply** button

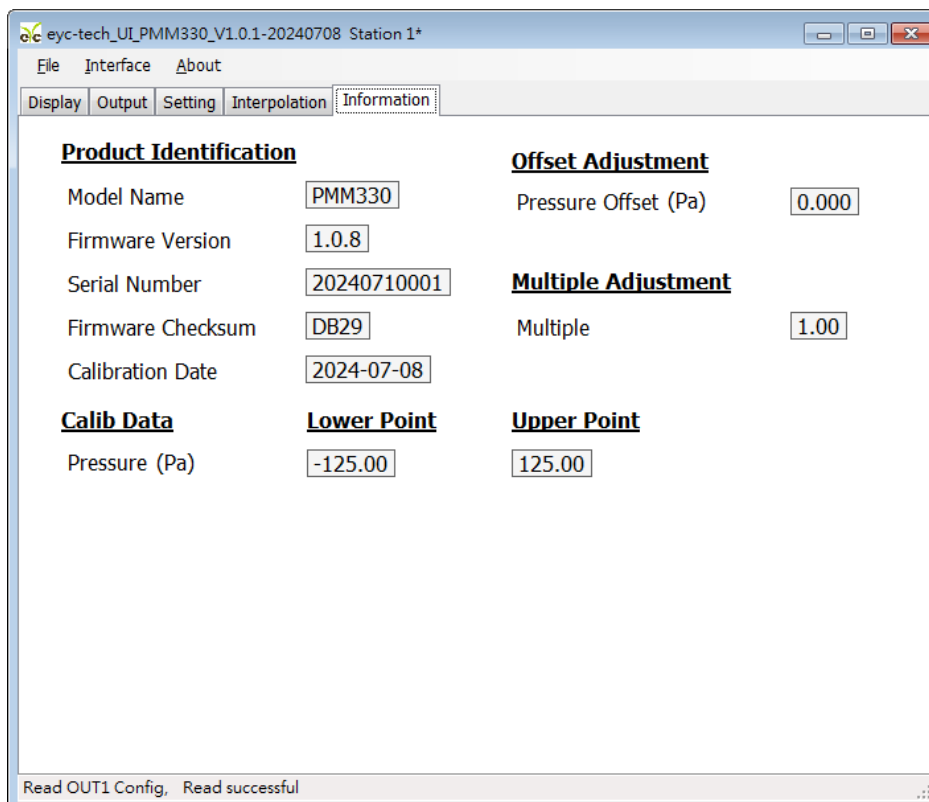
At the bottom of the window, a status bar reads: 'Read OUT1 Config, Read successful'.

6. Unit setting, data display and data logging

- Pressure unit: mbar, Pa, hPa, kPa, mmH2O, mmWS, inH2O, mmHg
- Export file: *.CSV



7. Transmitter information



| Product Identification | | Offset Adjustment | |
|------------------------|-------------|----------------------|-------------|
| Model Name | PMM330 | Pressure Offset (Pa) | 0.000 |
| Firmware Version | 1.0.8 | | |
| Serial Number | 20240710001 | Multiple Adjustment | |
| Firmware Checksum | DB29 | Multiple | 1.00 |
| Calibration Date | 2024-07-08 | | |
| Calib Data | | Lower Point | Upper Point |
| Pressure (Pa) | -125.00 | 125.00 | |

eyc-tech Measuring Specialist

enhance your capability with **sensor** technology

Air flow | Humidity | Dew point | Differential pressure | Liquid flow

Temp. | Pressure | Level | Air quality | Signal meter



Tel. : 886-2-8221-2958

Web : www.eyc-tech.com

e-mail : info@eyc-tech.com